

Used Fuel Disposition Campaign

On-Line Waste Library (OWL)

Walter Walkow

Solutions Architect, Data Sciences, SNL

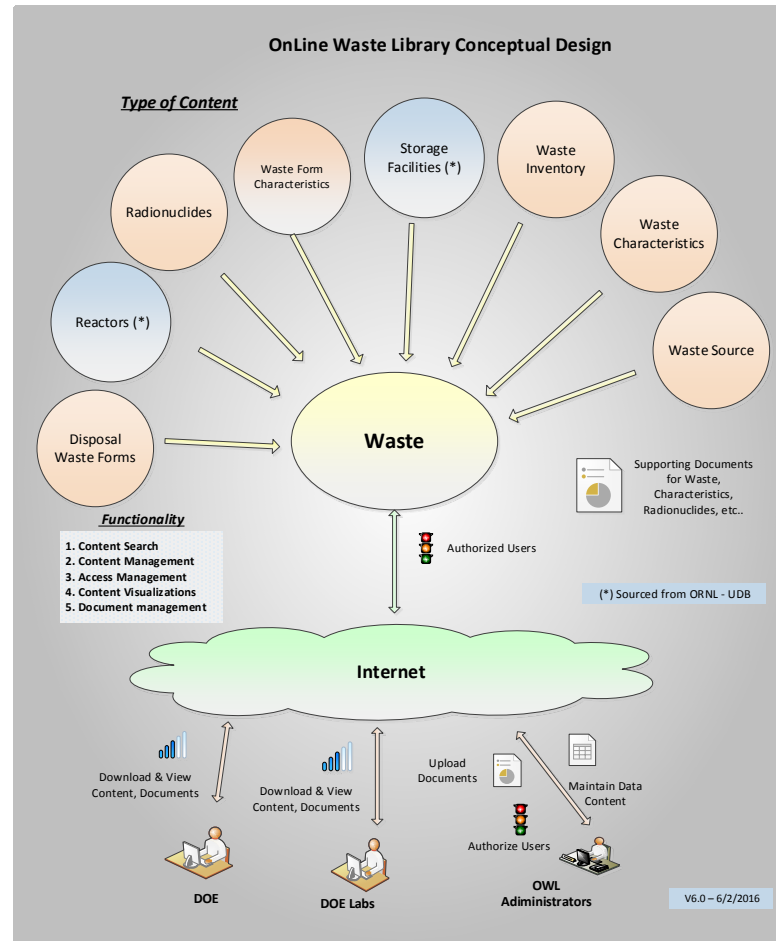
Database and Capabilities

June 7, 2016

What is OWL, What objective does it support?

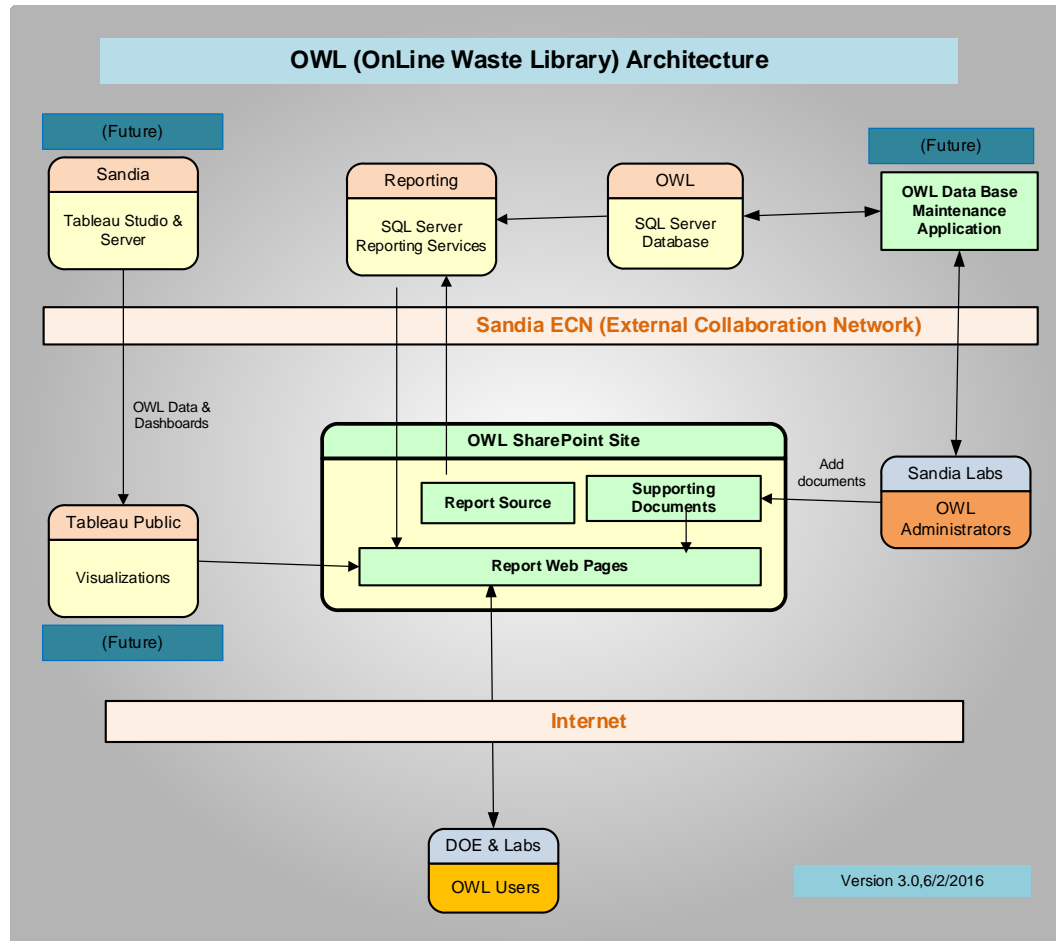
- OWL – The on-line waste library (OWL) contains detailed cross-linked information, both technical and organizational, regarding DOE-managed high-level waste (HLW) and spent nuclear fuel (SNF) (D-wastes), and other DOE-managed radioactive wastes that are likely candidates for deep geologic disposal, with links to the current supporting documents for the data (where possible).
- Supports “Identifying, listing, and developing inventories for DOE managed high level waste (HLW) and spent nuclear fuel (SNF) (D-wastes)...”
 - As identified in presentation by Ed Matteo, March 2016, DOE-Managed Spent Nuclear Fuel and High Level Waste Research.

OWL Conceptual Design



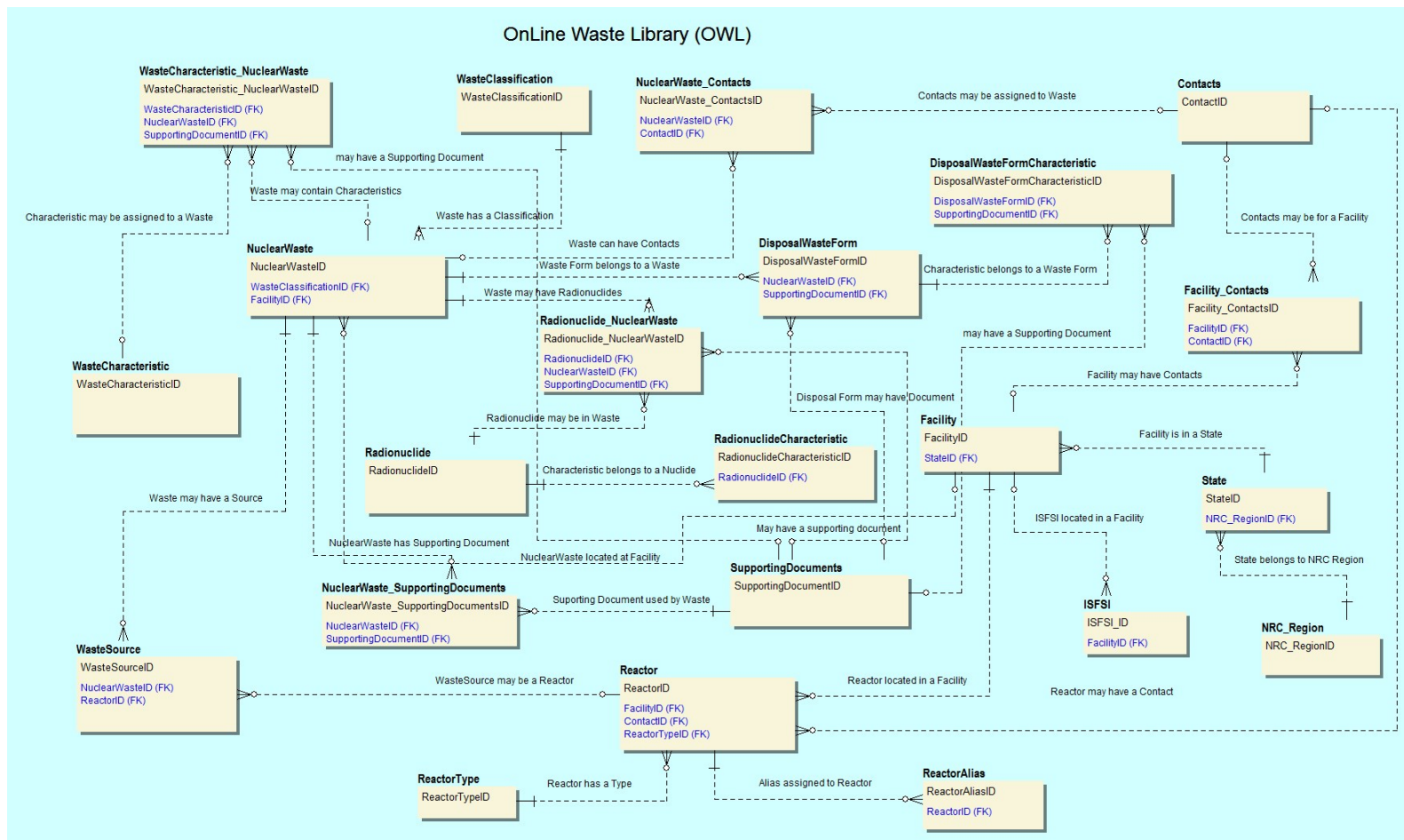
Used Fuel Disposition

Architecture



Used Fuel Disposition

Database Design – contains related content



- Database design has been implemented at SNL
- Sample content has been added to validate that design supports HLW
- Sample Reports developed to provide content searching
- Sample Reports developed to display waste detail
- Sample visualizations developed to expose possible future capabilities
 - Demonstration of OWL capabilities at later session today (see schedule)

Where Do We Go From Here?

- **Add sample content to validate data base supports Spent Nuclear Fuel**
- **Design & Implement data maintenance application.**
- **Clarify target audience (DOE, Labs), future audience (Universities?)**
- **Identify data classification (all Unclassified Unlimited Release?)**
- **Obtain feedback from UFD members to validate design & identify additional content capabilities**
- **Develop phased project plan to populate database, implement new functionality**
- **Identify Quality Assurance process (review & approval process?)**