

# SNL-Delft3D-CEC

3D/2D modeling suite for integral water solutions



## Getting Started



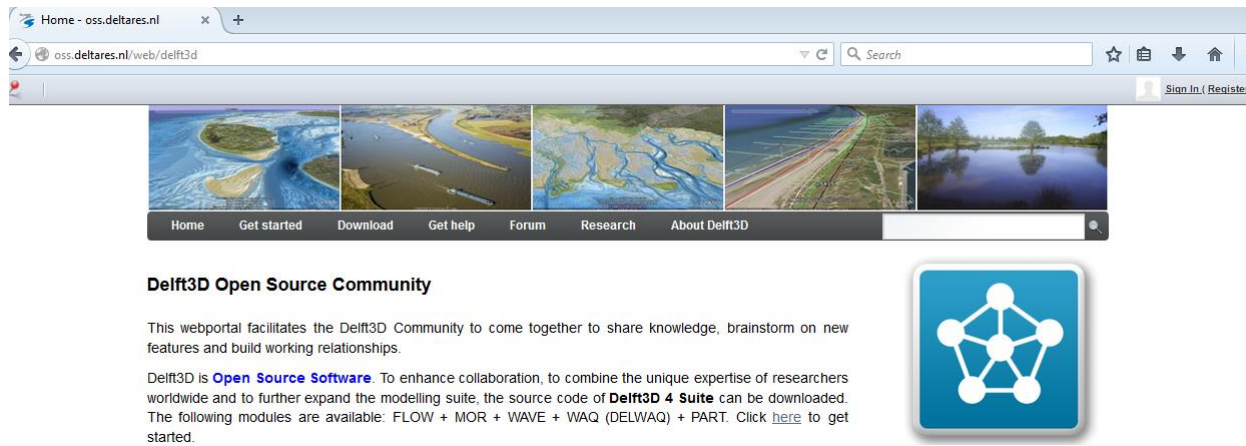
# Executable hosting

The compiled simulation modules needed for installation will be hosted here:

<https://github.com/SNL-WaterPower/Delft3D/tree/master/bin>



# Installation

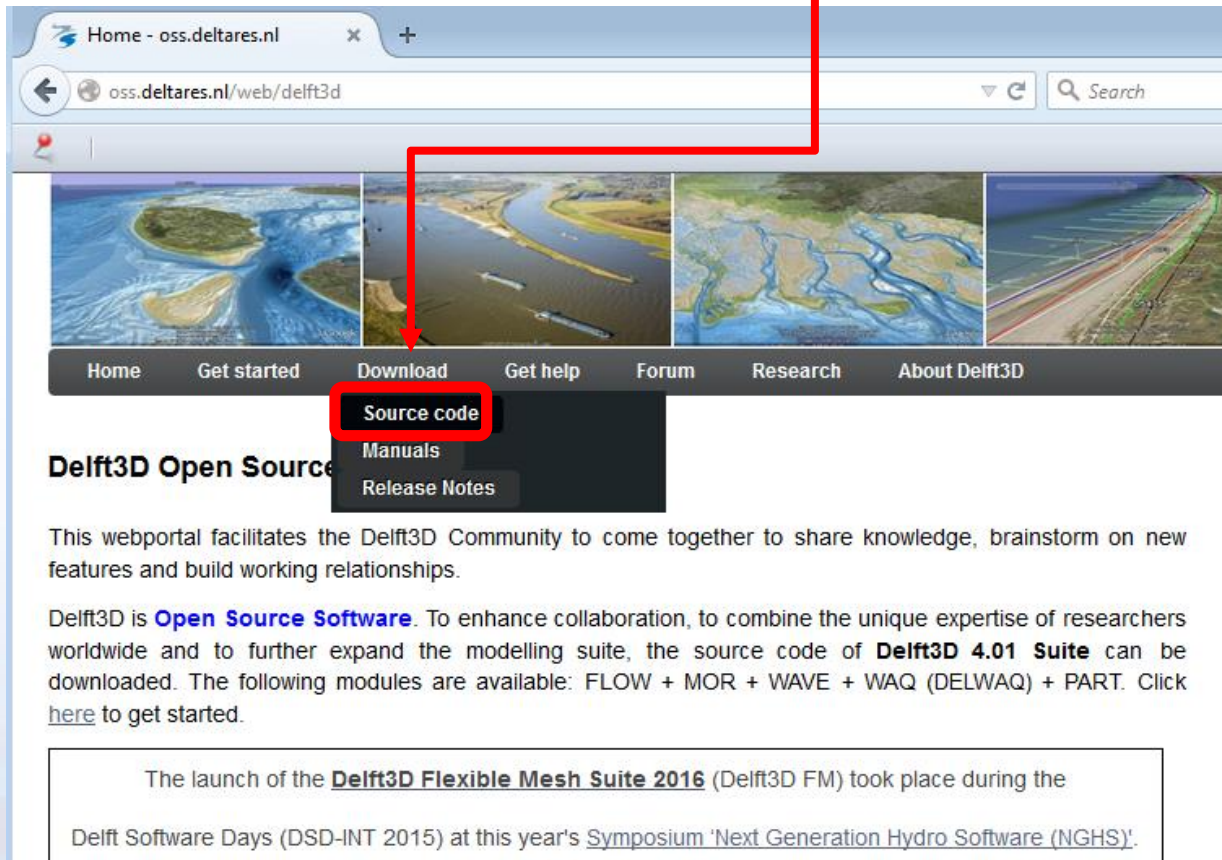


- Go to Delft 3d home page:  
<http://oss.deltares.nl/web/delft3d>
- Register as a user by clicking the Sign In/(Register) link at the top-right corner of the home page.
- Fill in the needed information to become a registered user.



## Downloading Delft 3D GUI

- Next, hover over the “Download” link and click on “Source Code”



Home - oss.deltares.nl

oss.deltares.nl/web/delft3d

Home Get started **Download** Get help Forum Research About Delft3D

**Source code**  
Manuals  
Release Notes

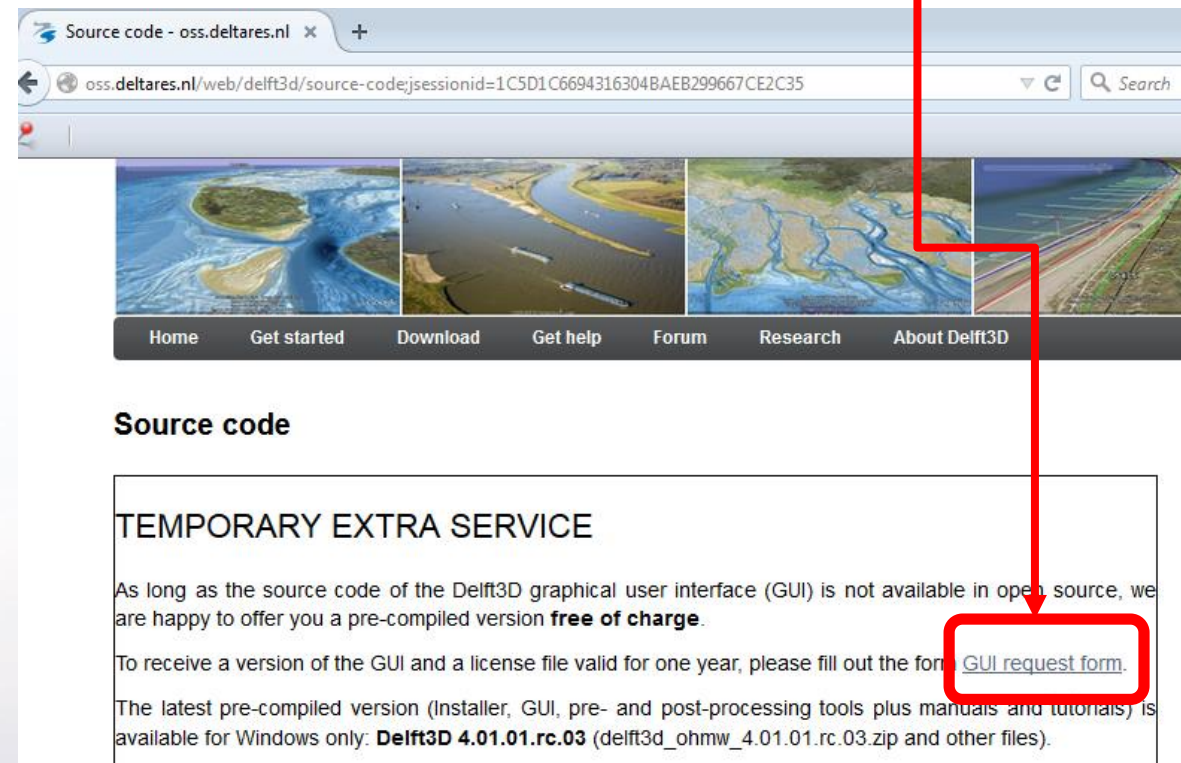
**Delft3D Open Source**

This webportal facilitates the Delft3D Community to come together to share knowledge, brainstorm on new features and build working relationships.

Delft3D is **Open Source Software**. To enhance collaboration, to combine the unique expertise of researchers worldwide and to further expand the modelling suite, the source code of **Delft3D 4.01 Suite** can be downloaded. The following modules are available: FLOW + MOR + WAVE + WAQ (DELWAQ) + PART. Click [here](#) to get started.

The launch of the **Delft3D Flexible Mesh Suite 2016** (Delft3D FM) took place during the Delft Software Days (DSD-INT 2015) at this year's [Symposium 'Next Generation Hydro Software \(NGHS\)'](#).

- “Temporary Extra Service” window should pop up. Click on the “GUI request form” link within the text.



Source code - oss.deltares.nl

oss.deltares.nl/web/delft3d/source-code;jsessionid=1C5D1C6694316304BAEB299667CE2C35

Home Get started Download Get help Forum Research About Delft3D

**Source code**

**TEMPORARY EXTRA SERVICE**

As long as the source code of the Delft3D graphical user interface (GUI) is not available in open source, we are happy to offer you a pre-compiled version **free of charge**.

To receive a version of the GUI and a license file valid for one year, please fill out the form [GUI request form](#).

The latest pre-compiled version (Installer, GUI, pre- and post-processing tools plus manuals and tutorials) is available for Windows only: **Delft3D 4.01.01.rc.03** (delft3d\_ohmw\_4.01.01.rc.03.zip and other files).



- Fill out request form and click submit.
- Deltares will fill the request in 1-2 days.
- Once filled, Deltares will send you an e-mail with a license file, and a link to their FTP-site that houses the GUI, pre & post processing tools and manuals.
- The files to be downloaded from the FTP-site are:
  - License agreement
  - Installation guide
  - Installation program DS\_Flex.exe for licensing the Delft3D Graphical User Interface
  - DS\_FLEX User Manual
  - Delft3D zip file
  - MCR installer, needed to run QUICKPLOT

## Request form for Delft3D Graphical User Interface

Fill in the following fields to request the Delft3D Graphical User Interface

\* Required

Surname \*

First name: \*

Initials

Gender \*

Female

Male

User name [oss.deltares.nl](http://oss.deltares.nl) (screen name): \*

E-mail (used to register on site): \*

Organization: name \*

Organization: address \*

Organization: postal code

Organization: city \*

Organization: country \*

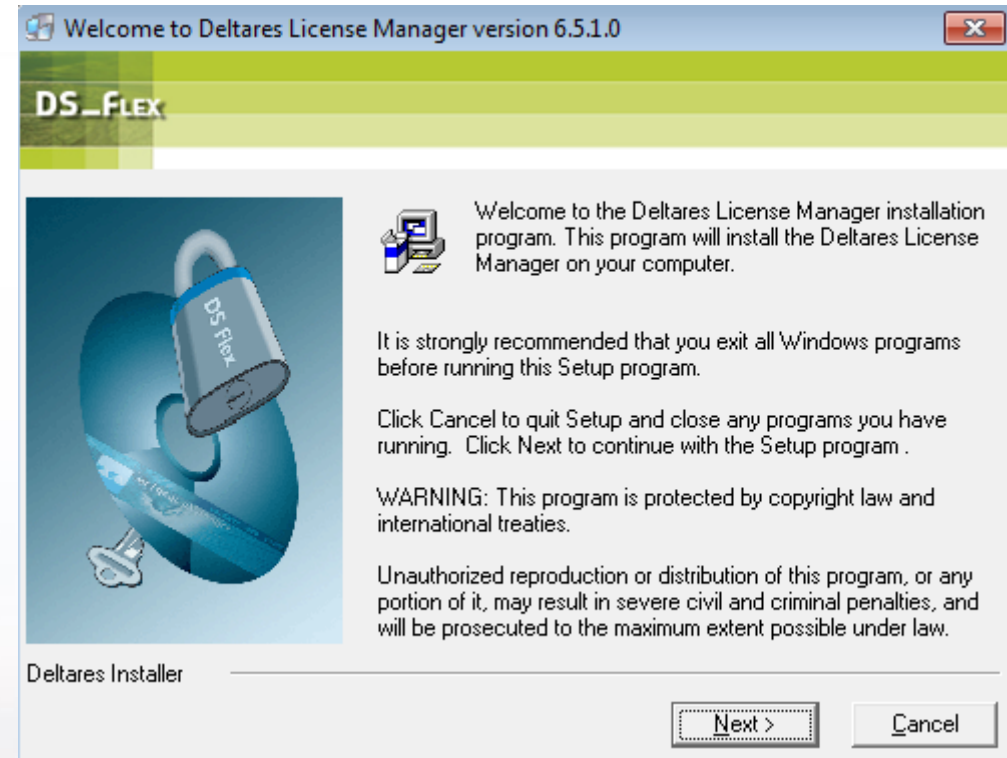
Note: the pre-compiled Delft3D GUI is available on Windows only. For running Delft3D simulations on Linux, please create the input files on Windows using the Delft3D Windows GUI.

Submit



# GUI License Installation

- Download the license file and copy its file location.
- Run DS\_Flex.exe in order to install the license.
- When prompted, locate your license file by pasting your file's path in the File name box.
- Finish by clicking “Install>”



# Simulation Module Installation

- With the GUI installed you just need to install a compiled version of the simulation kernels to start running simulations.
- For your convenience, a precompiled simulation kernel package is available for download from the SNL Water Power Git repository.
  - Download the “[win32.rar](#)” file, and extract the win32 directory.
  - Install the kernels by performing a “copy and replace” of the extracted win32 directory over the win32 directory in your GUI installation folder.
- You can also download the source code of the SNL-Delft3d-CEC simulation kernels from the [SNL water Power Git repository](#) and compile it.
  - Compilation instructions can be found at the [Delft3D Open Source Community Site](#)

