

# Used Fuel Disposition R&D Campaign

## *DOE-Managed HLW and SNF Research Organizational and Procedural Frameworks*

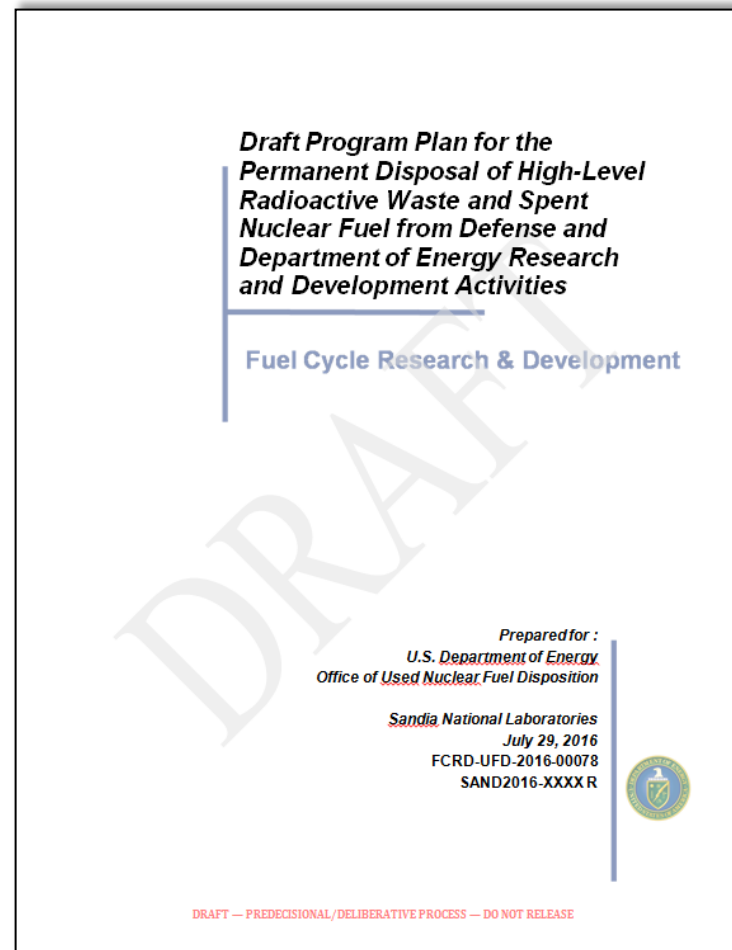
**Peter Swift for Gordon Appel  
Used Fuel Disposition R&D Campaign**

**Las Vegas, NV  
June 9, 2016**

■ **1.02.08.05.03: Organizational and Procedural Frameworks**

- Program Planning (SNL)
  - *Objective: Develop a Draft Generic Program Plan identifying and summarizing the principle elements necessary for a generic repository program for disposal of DOE managed HLW and Spent Fuel.*
  - *L2 Milestone due July 29 2016: Draft Program Plan for the Permanent Disposal of High-Level Radioactive Waste and Spent Nuclear Fuel from Defense and Department of Energy Research and Development Activities*
- Organizational Framework (SNL)
  - *Objective: develop a draft document identifying and summarizing the principle elements of a generic repository licensing infrastructure and organizational framework.*
  - *L2 Milestone due September 16, 2016: Generic Organizational and Procedural Framework for DOE Managed HLW and SNF Licensing*
- Develop and Implement Operating Procedures (SNL)
  - *Objective: Develop a draft document identifying and summarizing the principle operating procedures for a generic repository licensing organization*
  - *L4 Milestone due September 16, 2016: Draft Summary of operating procedures needed generic repository licensing*
- Interactions with Regulator
  - *Not funded in FY16*

- **Draft report currently in NE-53 review (approx. 70 p.)**
  - Addresses mission, cost, schedule, and organizational framework
- **Final deliverable to DOE will also be a draft report**
  - Primary audience is internal DOE decision-makers
  - Goal is to inform DOE planning

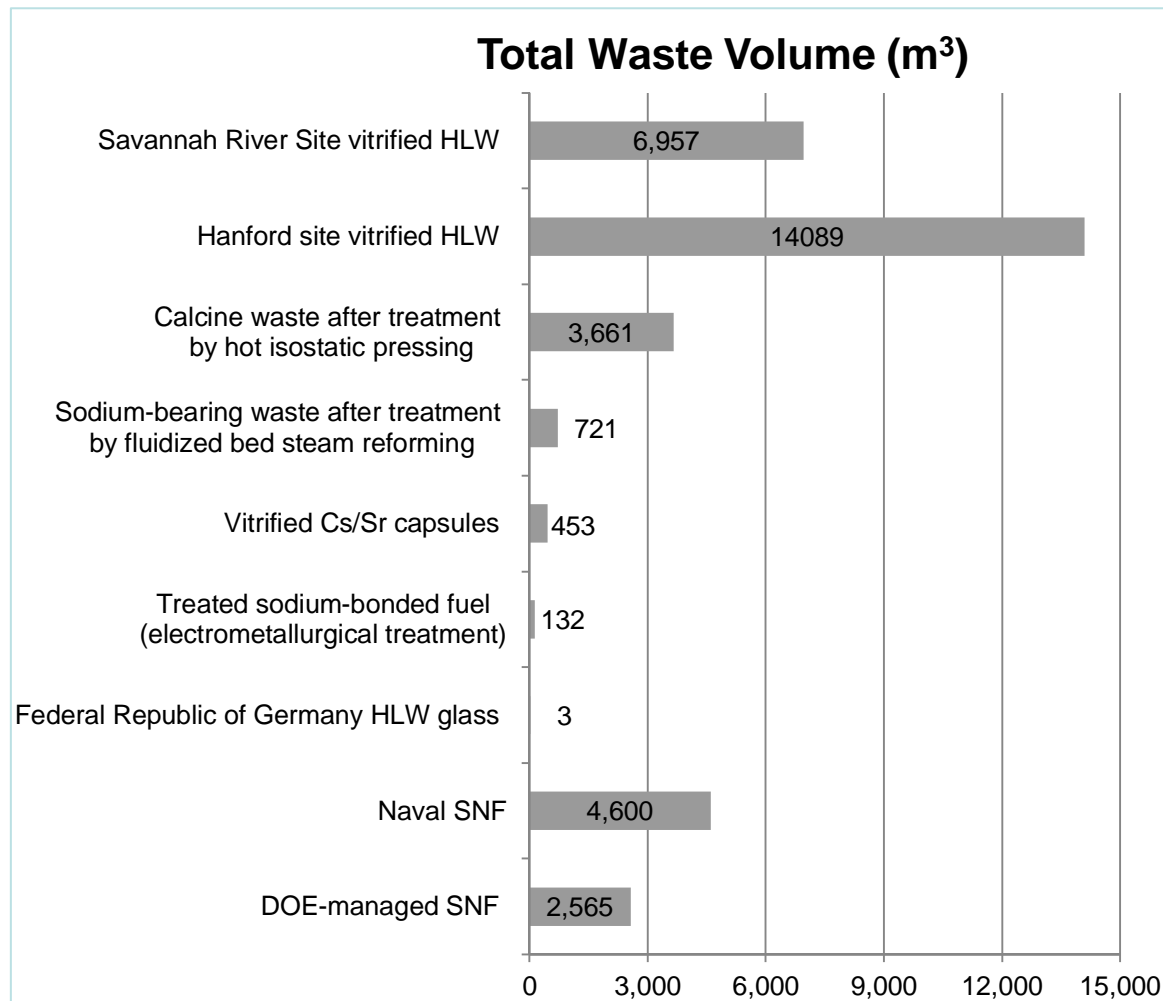


# Used Fuel Disposition

## DOE Managed HLW and SNF Research: *Program Planning Work Product (cont.)*

### Inventory

Volume of HLW and SNF derived from atomic energy defense activities or DOE research and development activities estimated as of 2048 (SNL, 2014)



# Used Fuel Disposition

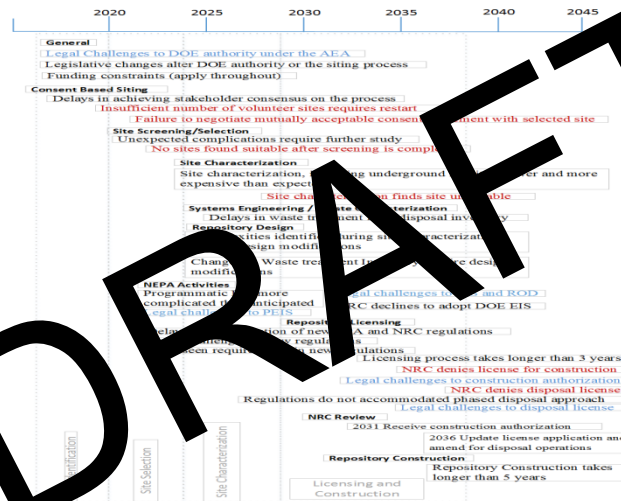
## DOE Managed HLW and SNF Research: *Program Planning Work Product (cont.)*

### Timeline



## DOE Managed HLW and SNF Research: *Program Planning Work Product (cont.)*

### Risks



DRAFT

## Costs

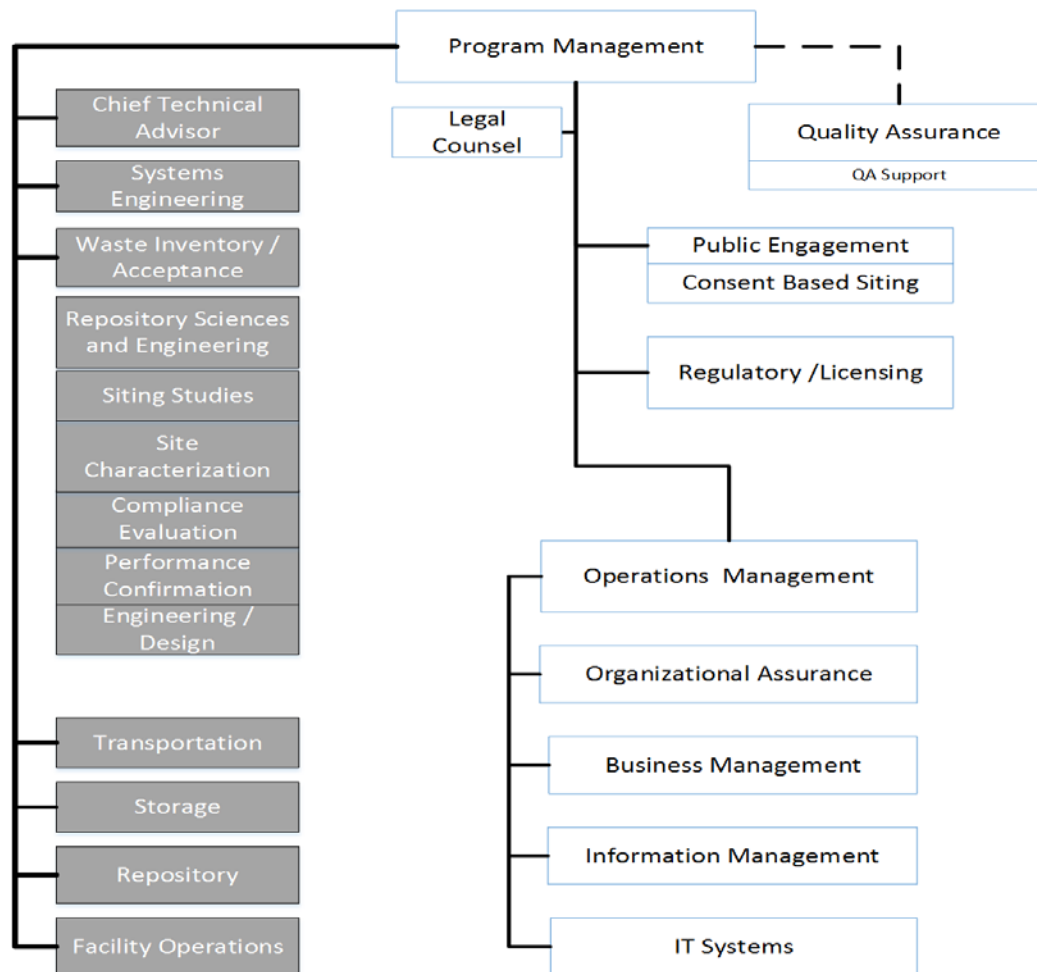
	Site Identification				Site Selection				Site Characterization									
	2017	2018	2019	Cumulative	2020	2021	2022	Cumulative	Cumulative	2023	2024	2025	2026	2027	Cumulative	Cumulative	Cumulative	Cumulative
	2017-2019	2017-2019	2017-2019	2017-2019	2020-2022	2020-2022	2020-2022	2020-2022	to Date	2023	2024	2025	2026	2027	2023-2027	to Date	2028-2038	to Date
Process/Community Relations	14	16	10.5	40.5	19	16	16	51	91.5	62	62	62	62	62	312	403.5	536	939.5
Site Screening and Selection	3.5	11	28	42.5	100	150	150	408	450.5	10	10	10	10	10	50	460.5	0	460.5
Site Characterization				0	5	45	50	50	50	120	120	120	120	120	600	600	540	1190
Waste Characterization	0.5	0.5	1	2	3	3	3	9	9	5	10	10	10	10	45	46	55	101
Repository Design	0.5	0.5	2	3	5	10	17	32	32	35	70	105	140	175	310	385	695	
NEPA Activities	1	4	4	9				14	14	10	10	10	10	10	50	123	130	253
Repository Licensing	0.5	0	0	0	2	2	4	13	13	10	10	20	20	20	100	115	165	280
Repository Construction				0				0	0	100	250	200	90	90	730	730	2800	3530
Repository Operations								0	0						0	0	180	180
Management Support	3		6	9	20	20	26	66	78	20	25	25	35	35	140	218	330	548
TOTAL	23	35	48.5	111	212	272	343	643	754	367	527	517	433	458	2302	3056	5321	8377

Estimated annual program costs from inception through first disposal of waste

# Used Fuel Disposition

## DOE Managed HLW and SNF Research: *Establish organizational framework to meet regulator expectations*

### Organization

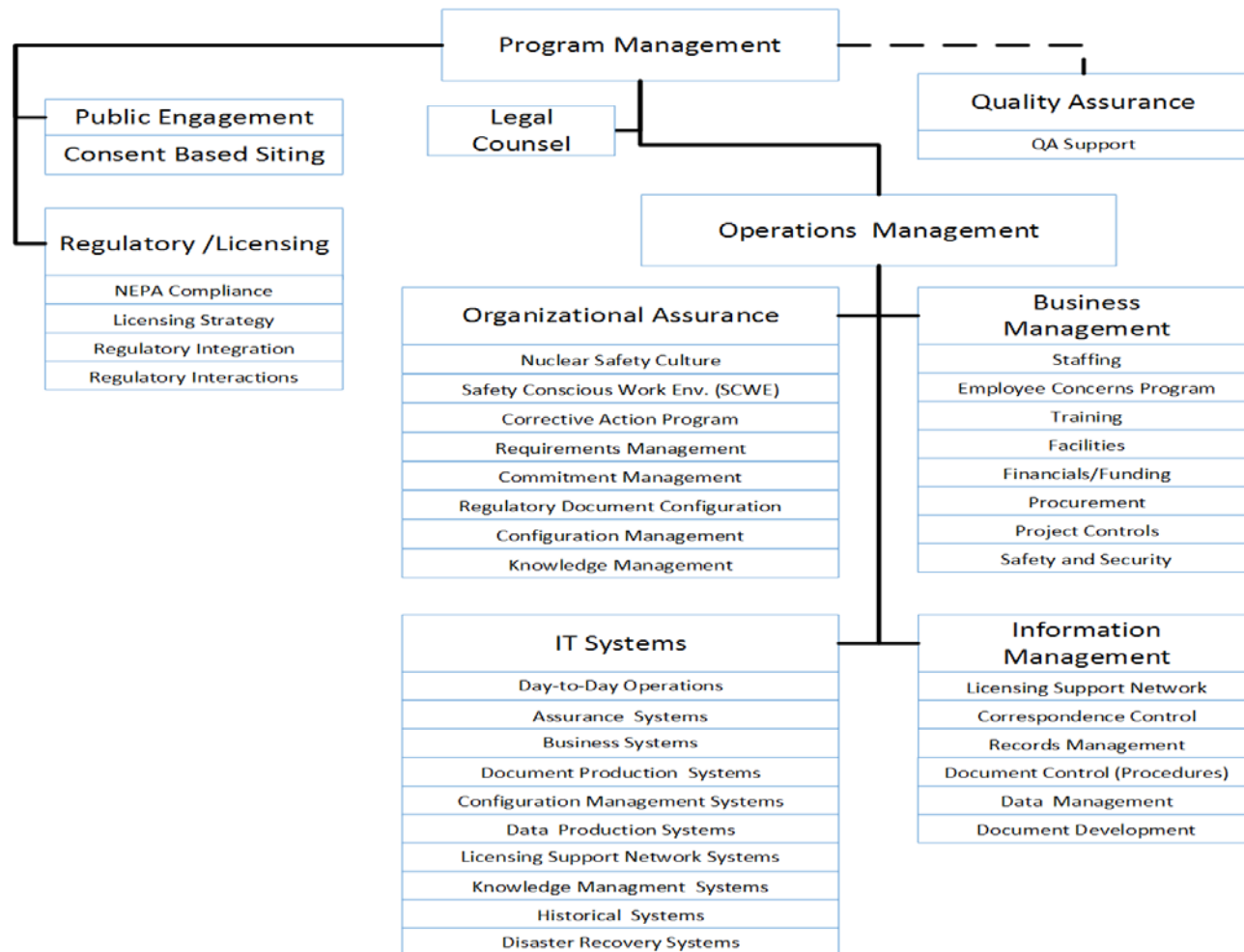




# Used Fuel Disposition

## DOE Managed HLW and SNF Research: *Establish organizational framework to meet regulator expectations*

### Support Organization (Detail)

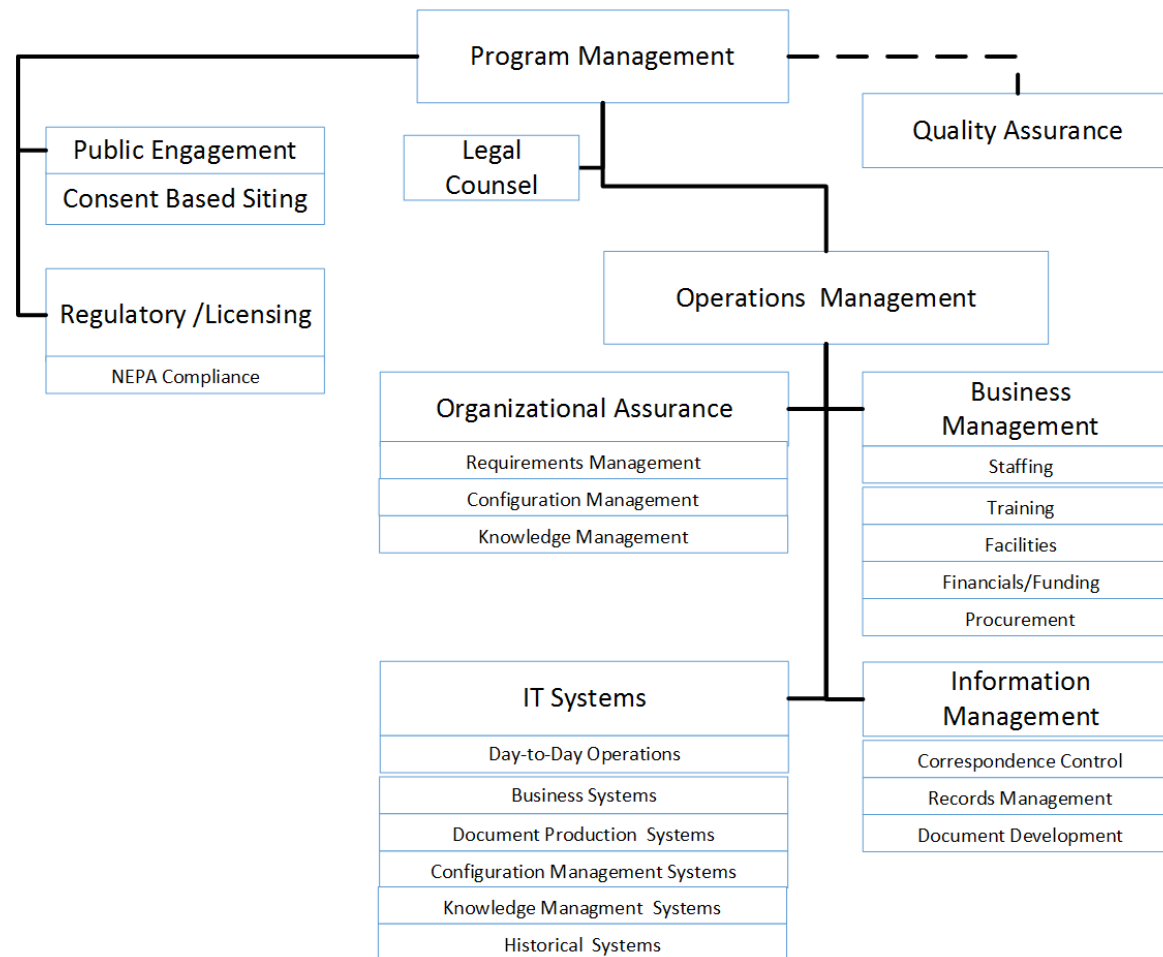


## Procedures Analysis

- **In 2009 Yucca Mountain had**
  - 9498 controlled documents in CDIS
  - ~ 900 Policies, Plans, Procedures
    - ~750 considering overlap and relevancy
- **Categorizing by Time Phase needed and owner organizational element**
- **Objective to list Key Procedures by Organizational Element in the Procedure document.**

# Organization for Startup Phase

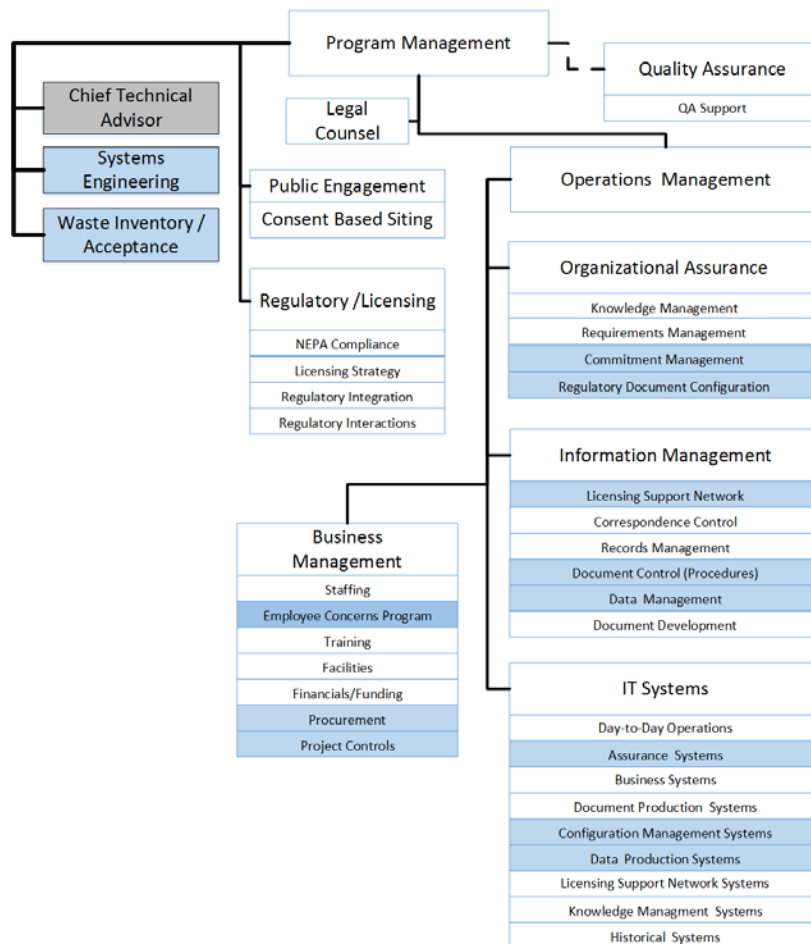
## Phase : Startup



# Used Fuel Disposition

## Organization for Initiation Phase

### Phase : Initiation

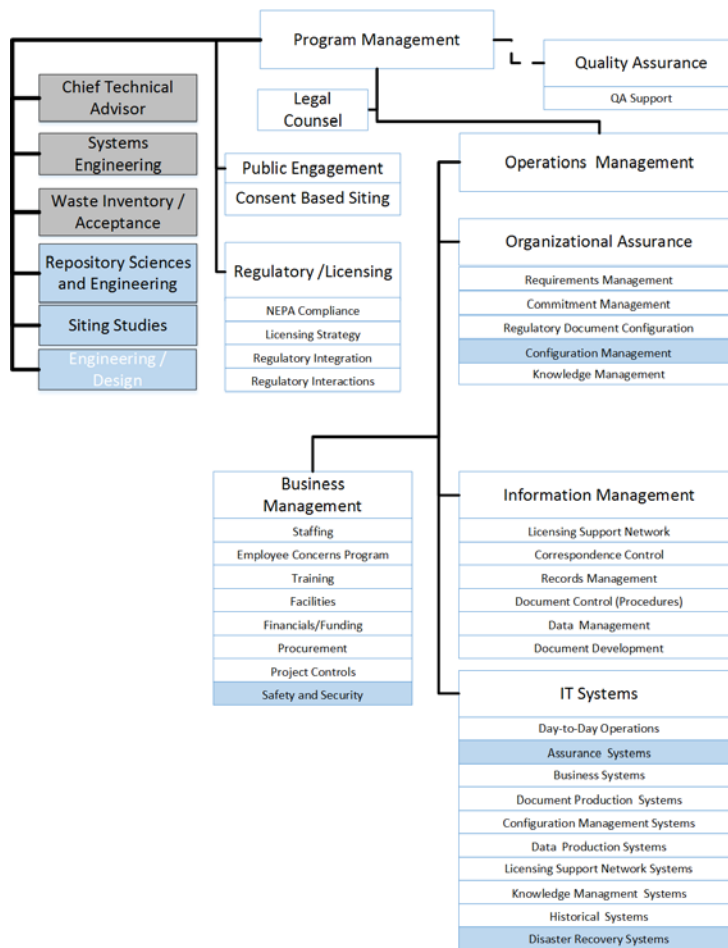


Note: Blue shaded boxes are added in this phase.

# Used Fuel Disposition

## Organization for Siting Phase

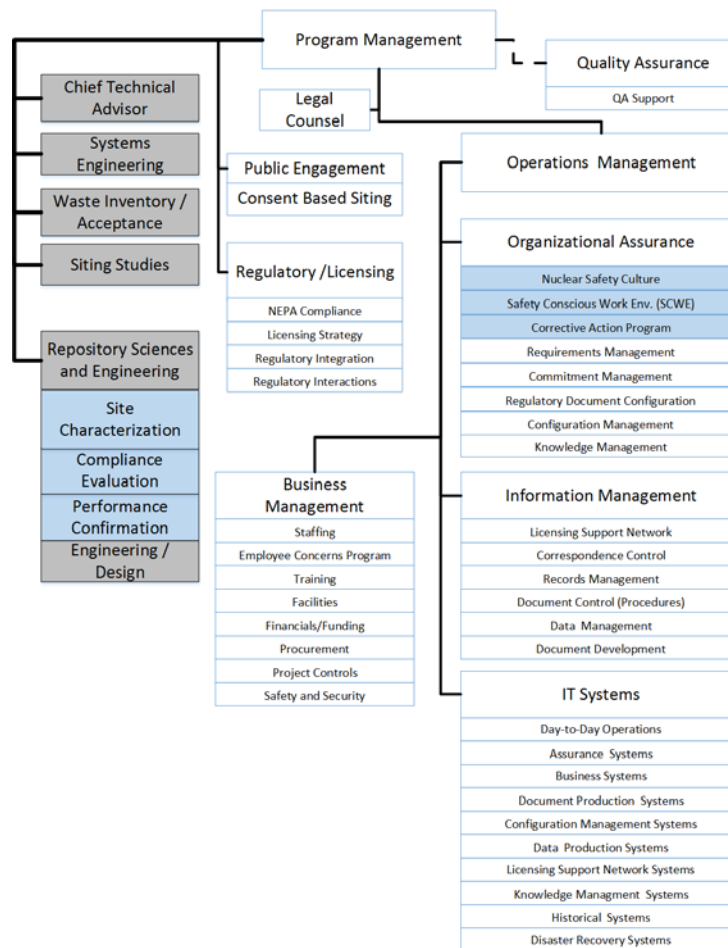
### Phase : Siting



Note: Blue shaded boxes are added in this phase.

# Organization for Site Characterization Phase

## Phase : Site Characterization



Note: Blue shaded boxes are added in this phase.

# Used Fuel Disposition

## Organization for Licensing Phase

### ■ Phase : Licensing

